



Automation Studio™ Quick Installation Guide

Table of Contents

1	Introduction	1-3
2	Installing and Starting Automation Studio™	2-1
2.1	Minimum Required Configuration.....	2-2
2.2	Installing Automation Studio™	2-4
2.2.1	Installation from Download	2-4
2.2.2	Silent Installation	2-11
2.3	Starting Automation Studio™.....	2-15
2.3.1	Template and Standards Database Update	2-15
2.3.2	Windows firewall.....	2-18
2.3.3	Quick Start	2-19
2.3.4	Choosing the License Type.....	2-19

1 Introduction

Automation Studio™ is an innovative product always trying to meet the changing needs of its users. The purpose of the present guide is to help you in the installation procedure of the product.

Licenses

Before its first launch, Automation Studio™ must obtain a “license”. All the information about one or more of your licenses is stored on a protection key. This information includes:

- The Automation Studio™ version;
- The Automation Studio™ edition (Professional, Educational, **Simulation** or Design);
- The workshops and modules that are activated;
- The license type (local or network).

In the case of a **local** license, the USB key must be connected directly into the USB port of the workstation where Automation Studio™ is installed. In this scenario, the license can only be used by the local user.

A **network** license is meant to be shared by multiple workstations. The USB key must then be connected into the USB port of a machine, which can be accessed by the workstations. That machine runs the “License Manager”.

This guide describes how you can configure Automation Studio™ depending on whether you use a local or a network license. In the latter case, if this task is your responsibility, you will also learn how to install the components required to use a network license, as well as how to manage your network licenses.

2 Installing and Starting Automation Studio™

This document explains the installation procedure for Automation Studio™. You will also learn how to configure the application to connect to an Automation Studio™ License Manager or to a local license.



For more detailed information you can consult the full version of the “Installation and Administration User guide” available for download on the [Client Zone](#).



We have recently changed the process to access the Technical Support portal, please follow the instructions below:

1. Use the following link to register to the new Client Zone which gives access to more content : <https://www.famictech.com/en/Registration>;
2. On the registration process, use the same email address used to register your product. If you would like to make a change, please contact us;
3. Follow the link sent by email to activate your account; in this moment you should be login in your account.
4. Log off and log in again so your access permissions are applied;
5. You can from now on access to the Support Portal at any time by clicking on the “Client Zone” button;



Figure 2-1: Client Zone

6. Click on “Technical Support Portal” to connect automatically.



Figure 2-2: Technical Support Portal

2.1 Minimum Required Configuration

- **Minimum Required Configuration for Professional Edition**

Please be sure to have the minimum required configuration:



A valid Automation Studio™ Professional Edition License.



Operating System Edition (32-bit or 64-bit): Windows 8.1, 10, 11 or Windows Server 2008R2 SP1, 2012, 2012R2, 2016, 2019 and 2022.
Recommended: Windows 10 64-bit.



CPU: Intel® Core™ i5 Quad-Core 5th generation 2.70GHz or equivalent. Intel® Core™ i7 Quad-Core 5th generation 3.00GHz and up is recommended.
Automation Studio™ takes advantage of multi-core processors.



Memory: 8 GB or more.



Graphic Card: Video memory 512 MB and up, with a screen resolution of 1024 x 768 minimum. Support for OpenGL 2.0 or Direct3D 11 is required for the 3D module.
NOTE: For use of Automation Studio™ Manifold workshop we recommend video card memory to be 1 GB or more.



Disk space: 5 GB of free space. Additional space is required for the catalogues.



USB port required, to support the protection key



- **Minimum Required Configuration for Educational Edition**

Please be sure to have the minimum required configuration:



A valid Automation Studio™ Educational Edition License.



Operating System Edition (32-bit or 64-bit): Windows 8.1, 10, 11 or Windows Server 2008R2 SP1, 2012, 2012R2, 2016 and 2019.
Recommended: Windows 10 64-bit.



CPU: Intel® Core™ i5 Quad-Core 2th generation 3.3GHz or equivalent. Intel® Core™ i5 Quad-Core 5th generation 3.00GHz and up is recommended.



Automation Studio™ takes advantage of multi-core processors.



Memory: 4 GB or more.



Graphic Card: Video memory 512 MB and up, with a screen resolution of 1024 x 768 minimum. Support for OpenGL 2.0 or Direct3D 11 is required for the 3D module.



Disk space: 5 GB of free space. Additional space is required for the catalogues.



USB port required, to support the protection key

2.2 Installing Automation Studio™

Automation Studio™ must be installed at each workstation on which it will be used. This chapter describes two installation methods:

- From download;
- Silent installation.



To install the application, the user must have administrative rights.

2.2.1 Installation from Download

2.2.1.1 Download package as new user

If it's the first time using Automation Studio™, after the purchase an email was sent to you with the invoice and with the direct link to download the software. Please use these credentials to download the software, if you are not the person in charge with the installation please forward these information to the right person.

In the same time, a package containing the protections key(s) (USB key(s)) will be sent to you, without the key you will not be able to use Automation Studio™.

The keys are not active, to activate the key after you have received them, you have to send an email to production department (production@famicttech.com), identify yourself and the key(s) and ask for the activation codes.

In the same time please registers (<https://support.famicttech.com/STW/stw/user/signup.jsp>) the key(s), this will give you access to the following:

- *"Customer request"* tab direct contact with our technical support team, where you can ask questions and find answers.
- *"Product Download"* tab from where you can download the updates or the full versions of latest Automation Studio™.
- *"Catalogue Download"* tab, from which you can download the latest version of the manufacturers catalogues.
- *"Documentation Download"* tab, from which you can download the latest version of the user's guides.
- *"Key Registry"* tab, for the update codes for the key(s), codes necessary for any key modification.

2.2.1.2 Download package as existing user

If you are an existing customer please connect to the [Client Zone](#) and download the full version, the package starting with PAS....

2.2.1.3 Installing Automation Studio™

To install proceed as follows:

1. Download the full version of Automation Studio™ (see previous chapter to know how);
2. Decompress the downloaded file into a temporary local folder.



Avoid installation through the network.

Installation Prerequisites

Before installing Automation Studio™, it may be necessary to update the computer and install certain drivers and utilities. Here is the sequence of actions to follow:

1. Make sure all the updates suggested by Microsoft have been installed;



Do not install Automation Studio™ while you update Windows.



To install the application, the user must have administrative rights.

The installation of prerequisites is necessary. DirectX drivers are installed each time the installation is executed.

Once zip file is decompressed, locate the file *setup.exe* and run it, the installation of Automation Studio™ starts.

2. A verification of administrator rights will be performed;

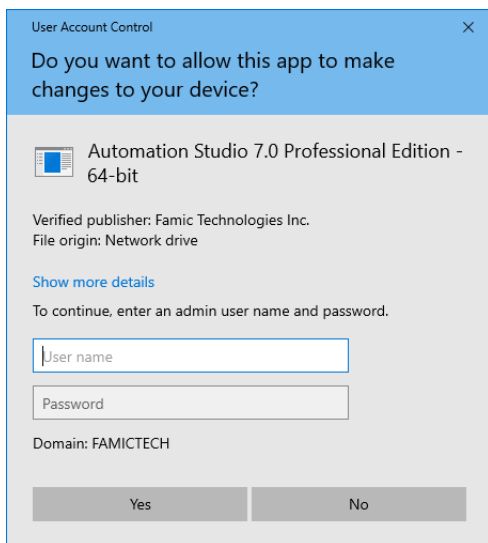


Figure 2-3: Administrator rights verification

If *Figure 2-3: Administrator rights verification* appears, it means that the account used for the installation does not have the administrator rights and an administrator is required in order to continue the installation. The administrator can enter the user name and password, and by selecting *Yes* the installation will continue.

If *No* is selected, a new dialog (*Figure 2-4: No administrator rights*) will appear. This confirms that the user does not have the privileges required to install the application and the installer will close.

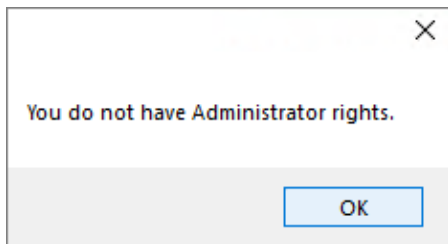


Figure 2-4: No administrator rights

If a user is using an account with administrator rights, the following validation will appear:

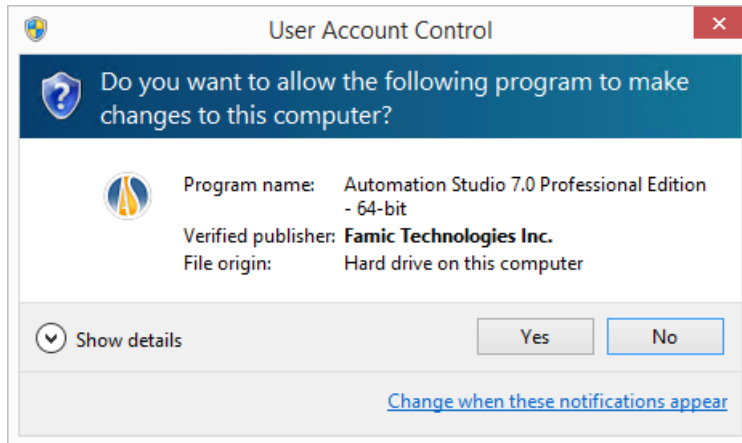


Figure 2-5: Automation Studio™ Installation

By selecting *Yes*, the installation will continue. By selection option *No*, the installer will close.

3. Select the language and click on “Next”;

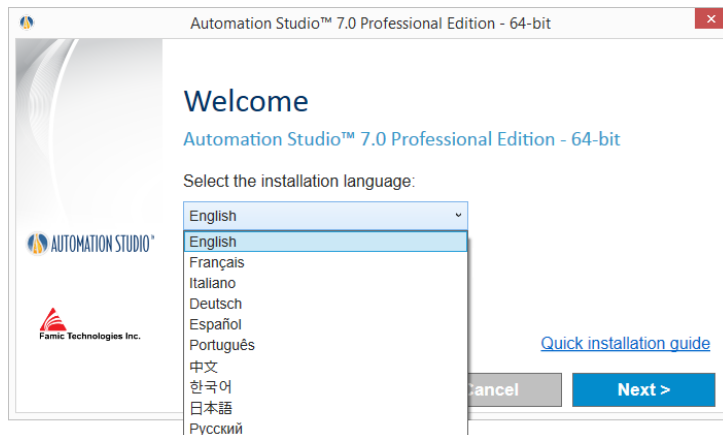


Figure 2-6: Language selection



The selected installation language is the language in which Automation Studio™ will be launched for the first time. The user can modify the language afterwards if needed.

4. Read the license agreement. Click “I accept ...”, and then click on “Next”;



Figure 2-7: License Agreement

5. This dialogue requires you to enter your name and your organization information. Once this is done, click on “Continue”;

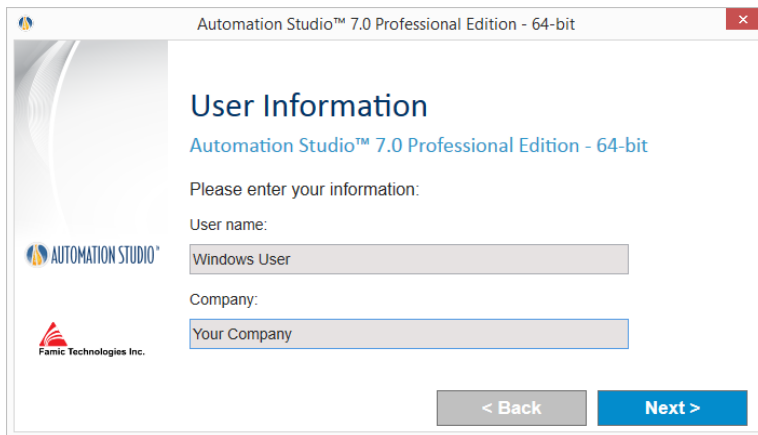



Figure 2-8: Customer Identification

6. Choose a destination folder. You can modify the suggested path by clicking on the browse button . Then click on “Install”;

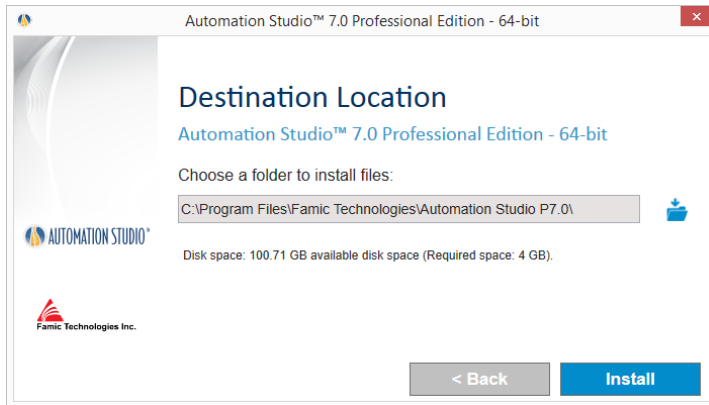


Figure 2-9: Destination Folder

7. The installation will continue automatically from this point. The wizard will show the following:

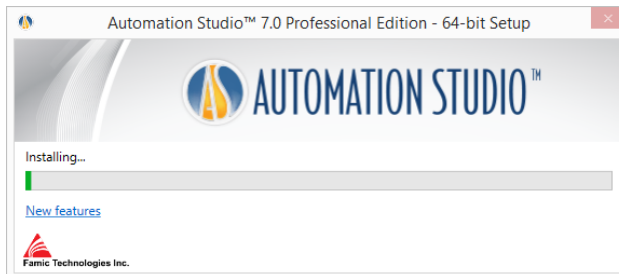


Figure 2-10: Installation Process

8. The wizard will also automatically open the Famic Technologies website page which displays the new features in Automation Studio™;
9. Depending on the programs and features installed on the computer, some prerequisites for Automation Studio™ will appear in the installation process;

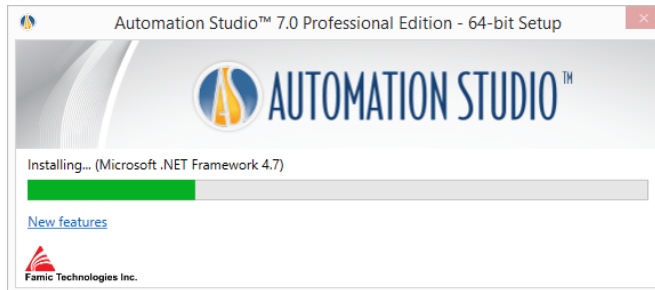


Figure 2-11: Prerequisite Installation

Some of the prerequisites are:

- Microsoft .NET Framework
- Microsoft Visual C++ 2013 Redistributable Package
- Sentinel Driver
- Text to Speech

10. The installation will continue automatically with Automation Studio™;

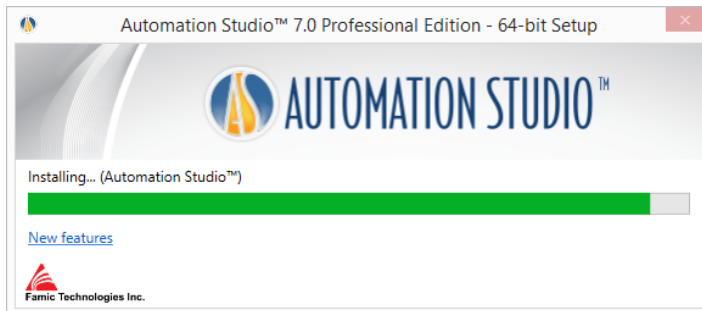


Figure 2-12: Installing Automation Studio™

11. A window will inform you when the installation is done. Click "Finish" to close the window;

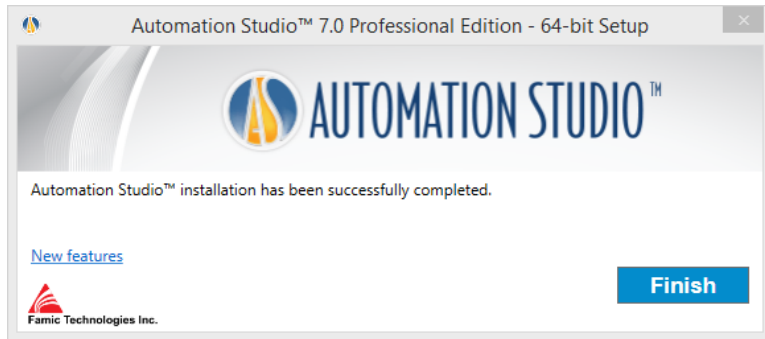


Figure 2-13: Installation Completed

If a new prerequisite program was installed with this installation, a restart may be required

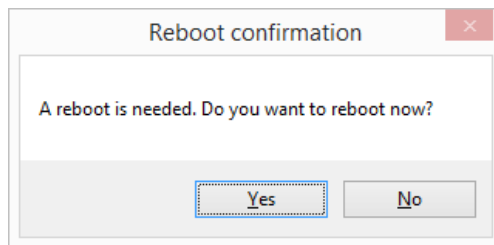


Figure 2-14: Reboot confirmation

2.2.2 Silent Installation

In some cases, especially when you have to install Automation Studio™ on several workstations, the installation can be done faster with minimal human intervention.

With the silent installation, no dialogue will appear during the installation process. You will only notice the new desktop icon created after the installation has ended.

Still the user sets the information for Automation Studio™ but prior to the installation.

These installation settings are:

- **Installation language:** The selected installation language will be the language in which Automation Studio™ will be launched for the first time. Afterwards, you may be able to modify the language if needed.
The available languages are:

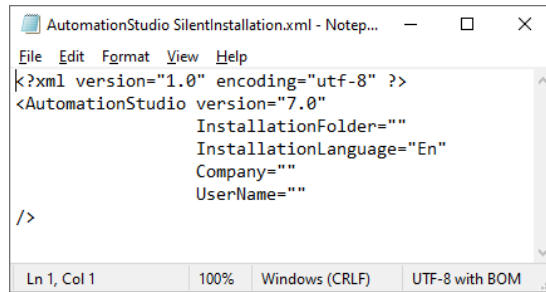
Code	Language
En	English
Fr	French
Al	German
Ch	Chinese
It	Italian
Po	Portuguese
Es	Spanish

- **User information:** it is possible to set by default the “Company name” and the “User name”. This information will be later available in the Automation Studio™ projects and will be displayed in fields or title blocks.
- **Installation folder:** the default path to install Automation Studio™ is “C:\Program Files (x86)\Famic Technologies\Automation Studio P7.0”. Depending on your operating system, the latter may be different.
(x86) indicates Automation Studio™ 32 bits and without (x86), 64 bits
P7.0 indicates Professional edition and **E7.0** indicates Educational edition.
This option allows you to modify the default path.

In silent installation, the above information can be set by editing the file “AutomationStudio SilentInstallation.xml”. This file can be found in the Automation Studio™ installation files and can be edited using *notepad*.

If this file is not modified prior to the silent installation, then the default values will be considered:

- Default installation language: English;
- Default installation folder: C:\Program Files (x86)\Famic Technologies\Automation Studio P6.3.

A screenshot of a Notepad window titled "AutomationStudio SilentInstallation.xml - Notep...". The window contains XML code for a silent installation. The code is as follows:

```
<?xml version="1.0" encoding="utf-8" ?>
<AutomationStudio version="7.0"
  InstallationFolder=""
  InstallationLanguage="En"
  Company=""
  UserName=""
/>
```

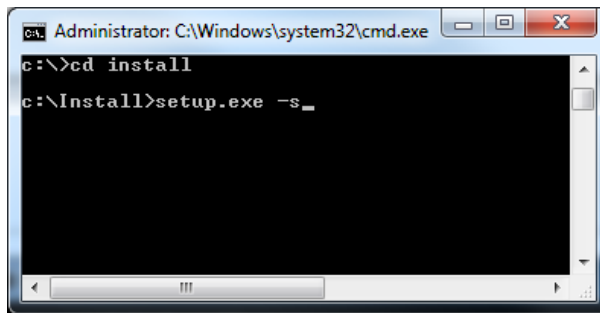
The status bar at the bottom of the window shows "Ln 1, Col 1", "100%", "Windows (CRLF)", and "UTF-8 with BOM".

Figure 2-15: Editing File "AutomationStudio SilentInstallation.xml"

Follow these steps to continue with the silent installation:

1. Open a Command Interpreter: in the Windows' "Start" menu, type **CMD** in the "Run" dialogue;
2. Reach the folder that contains Automation Studio™ installation files by typing **CD path** at the prompt (e.g.: **CD C:\Install**);
3. Type the following in the Command window as shown in the next figure:

setup.exe -s

A screenshot of a Command Interpreter window titled "Administrator: C:\Windows\system32\cmd.exe". The window shows the following commands and their output:

```
c:\>cd install
c:\Install>setup.exe -s
```

The window has a black background and white text. The status bar at the bottom shows "Administrator: C:\Windows\system32\cmd.exe".

Figure 2-16: Command Interpreter Window

4. Press the **ENTER** key to validate the command;

If necessary, it is possible to check on the *Windows Task Manager* that the process *setup.exe* is running.



You will know that the installation is completed when a shortcut to the application will appear on your desktop.

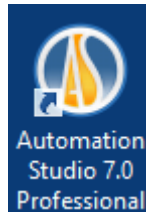


Figure 2-17: Shortcut to Automation Studio™

If the silent installation is executed and Automation Studio™ is already present on the computer, then the silent uninstallation will start automatically. You will only notice that the shortcut will disappear at the end of the process.

Note that you might still need to install a software patch after a silent installation. For more details, see section 3.2.1.4 *Installation of a Software Patch* from the complete *Installation and Administration user guide* DASADENFTP71U(to be downloaded from the [Client Zone](#) ->Technical Support Portal -> Product Documentation).

2.3 Starting Automation Studio™

After the installation of Automation Studio™, a shortcut to the application appears on your desktop. Double-click on the shortcut to start Automation Studio™.

You can also start Automation Studio™ through the Windows' "Start" menu.

2.3.1 Template and Standards Database Update

When there is a new fix or a new release of Automation Studio™, if any change was made on the enterprise standards (project or document options), a database update must be done, otherwise Automation Studio™ would not start.

Automatic Update

During the first launch of the new installed version, a warning message is displayed to inform the user that the standards database must be updated, based on the evolutions included in the new release of Automation Studio™. For local mode use of Automation Studio™, this update is done automatically but the following dialogue is displayed to inform the user about what will be done by the update tool.

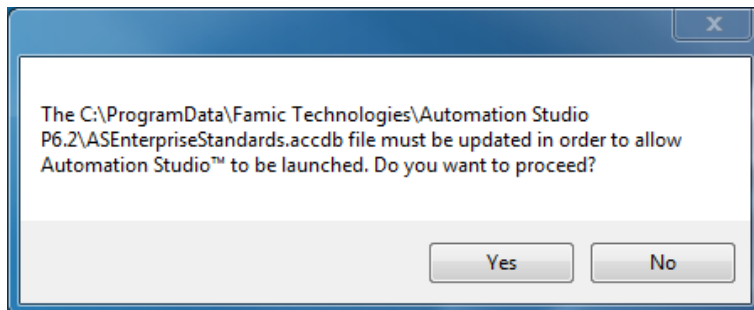


Figure 2-18 : Warning message "Update"

Click "Yes" to continue.

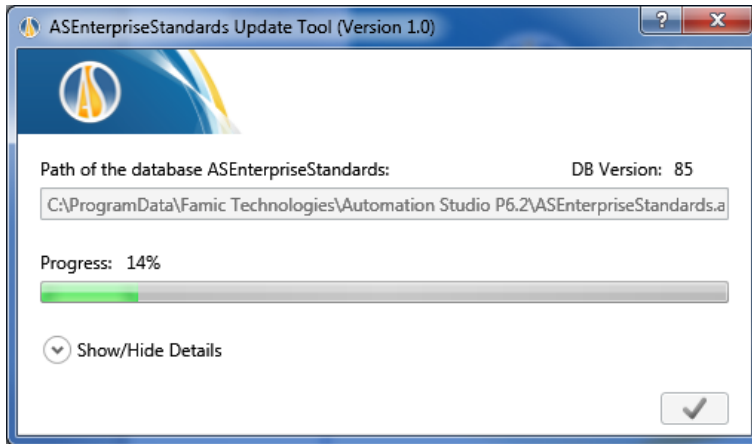


Figure 2-19 : Enterprise Standards Update Dialogue

Progress Window appears; the command  is used to finish the update. Now Automation Studio™ is ready to use.

Manual Update

If your company shares its standards for Automation Studio™ users, it means that the Standards database is located on a server elsewhere than on the computers using Automation Studio™. In this case, an administrator with WRITE permissions must perform the database update manually on the server.

To do so, the administrator would launch (from a machine where the new version of Automation Studio™ is installed) an external application called *AEnterpriseStandardsUpdateTool.exe*.

AEnterprise Standards Update Tool can be found on the Automation Studio™ installation folder; for example: *C:\Program Files (x86)\Famic Technologies\Automation Studio P6.X*. This application would open the dialogue described below.

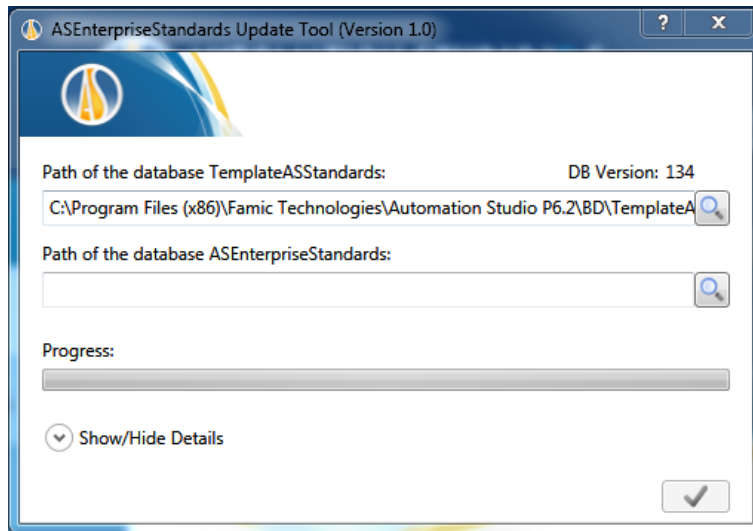




Figure 2-20 : Enterprise Standards Update Tool Dialog

- **“Path of the database TemplateASStandards”**: the default path corresponds to the template database that will be used for the update;
- **“Path of the database ASEnterpriseStandards”**: use the magnifying button  to navigate and double-click on the file *asenterprisestandards.accdb*. The default path corresponds to the local database. If this database is placed on a server, the path must be edited in this field;
- **“Progress Bar”**: to view the update progress status.


The command  is used to start the update after completing the fields described previously.

When the progress bar turns completely green, Automation Studio™ will be ready to use. Additionally, it is possible to close the ASEnterprise Standards Update Tool by clicking on  (at the top right corner).

Automation Studio™ will start normally now and it will be using the updated ASEnterprise Standards database.



To see the Enterprise Standard location for an installed version, click on the

Automation Studio™ Options that you will find in the menu .

Automation Studio™ is configured by default to use a local license and operate under the single-user mode. If this setting answers your needs, you can go to [2.3.3 Quick Start](#) and skip the rest of this chapter.

If you plan to use a **network license**, you will need to configure a connection to an Automation Studio™ License Manager (section [2.3.4.1 Connecting to a Network License](#)).

2.3.2 Windows firewall

Automation Studio™ does not need to be connected to the Internet to run but an exception need to be add for the port 5301(TCP)for the communication with the License Manager. Automation Studio™ is not an internet-based application.

Some messages may appear and are related to internal servers that communicate with Automation Studio™ via the internal network protocol. In a standalone setup, the communications never get out of the PC.

When using a multi-user setting, the communications are done between the Automation Studio™ Project Server and the clients' machines.

The only exception where Automation Studio™ will attempt to connect to the Internet is when it is checking for software updates (fixes). By default, this automatic update feature is set to run only once a month, but it can also be set to be run manually so that you can decide when you will check for updates.

The Automation Studio™ installation does not turn off the Firewall.

2.3.3 Quick Start

Read this section if the initial configuration of the application meets your needs (using a local license, and operate in single-user mode).



Before you launch Automation Studio™, make sure that the USB key that contains your license is connected in the USB port of your workstation.

Automation Studio™ should start normally when you launch the application. However, it is possible that the dialogue “License Information” (*Figure 2-21: “License Information” Dialog*) appears before Automation Studio™ is started: if it happens, check that the USB key that contains your license is properly connected to your workstation. Then, click the “Retry” button.



You can update your local license from the “License Information” dialogue. The procedure is described in section 2.3.4.4. *Updating a local license*

If Automation Studio™ refuses to open, and if other dialogue windows appear when you launch the application, it is probable that the initial configuration of Automation Studio™ has been modified. You might want to consult the following sections.

2.3.4 Choosing the License Type

You choose the type of license you want to use (local or network) inside the “Profile Properties” dialogue (*Figure 2-23: “Profile Properties”*).

You can access this dialogue by clicking on the “Network Configuration” button in the “License Information” dialogue (*Figure 2-21: “License Information” Dialog*). This dialogue appears when Automation Studio™ cannot obtain a license when it is started. This situation happens if:

- Automation Studio™ is configured to use a local license, but no USB key is connected to the workstation;
- Automation Studio™ is configured to connect to a remote Automation Studio™ License Manager, but this server does not have access to any license, or cannot be found.

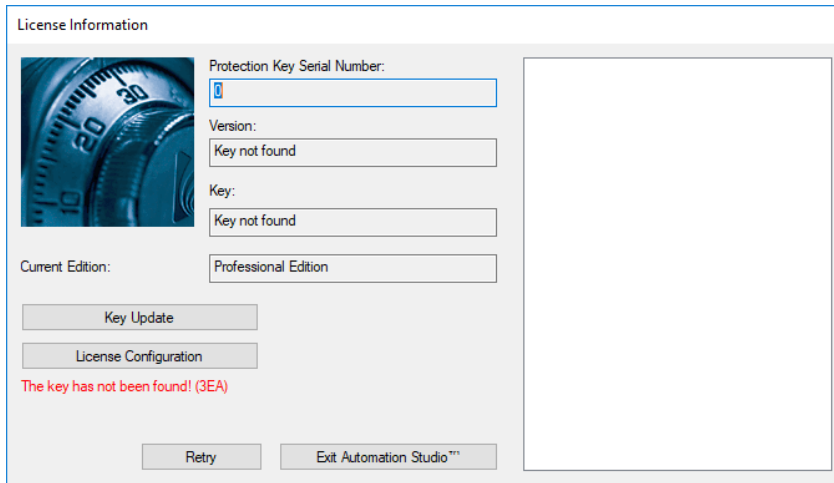


Figure 2-21: “License Information” Dialog

You can also access the “License Information” dialogue from Automation Studio™: choose the command “Licenses” in the “Administration” group, under the “Tools” tab (Figure 2-22: “Licenses” Command).

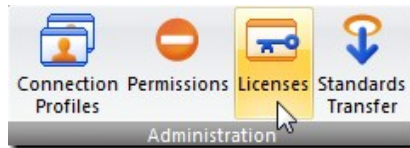


Figure 2-22: “Licenses” Command

2.3.4.1 Connecting to a Network License

To use a network license, you must configure Automation Studio™ to connect to an Automation Studio™ License Manager. To do so, open the “Profile Properties” dialogue (Figure 2-23: “Profile Properties”) by clicking on the “Network Configuration” button in the “License Information” dialogue.

The “Profile Properties” dialogue contains items that will be detailed on the complete version of the *Installation and Administration User Guide*. Here, we will only describe topics related to licenses (the highlighted part in the above figure).

Before you connect to an Automation Studio™ License Manager, make sure that:

- The keys that contain your licenses are connected to the USB ports of the machine

- that hosts the Automation Studio™ License Manager;
- The Automation Studio™ License Manager is running and configured; for configuration please refer to the *Automation Studio™ License Manager Basic installation Guide* (file DLMQIENFTP64U.pdf located on the *Automation Studio™ License Manager installer*) or the full version of the “*Installation and Administration User guide*” available for download on the [Client Zone](#).

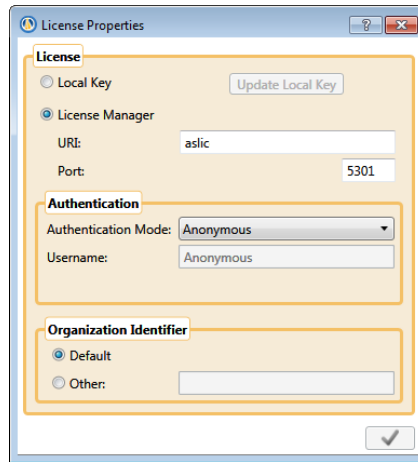


Figure 2-23: “Profile Properties”

To configure a connection to an Automation Studio™ License Manager, proceed as follows (the controls described below are those in the “License” right part section):

- **“Automation Studio™ License Manager”**: check this radio button;
- **“URI”**: enter the URI of the running Licence Server or server’s IP;
- **“Port”**: enter the Manager Service Port Number of the Automation Studio™ License Manager (port 5301 by default);
- **“Authentication Mode”**: choose the authentication mode that matches the user account you wish to use.



If you select the “Username & Password” authentication mode, you may enter your username and password in the reserved fields but it is optional.

- **“Organization Identifier”**: if the Automation Studio™ License Manager is installed on a machine you own, simply check the “Default” radio button; otherwise, check the “Other” radio button and enter your organization ID in the corresponding field.

If the application successfully contacts the Automation Studio™ License Manager,

Automation Studio™ will proceed with the user authentication.

The authentication is done automatically, unless you chose authentication by Username & Password, and the required information was not given in the “Profile Properties” dialog: in that case, you will have to provide the required information in a dialogue like *Figure 2-24: “Login” Dialog*.

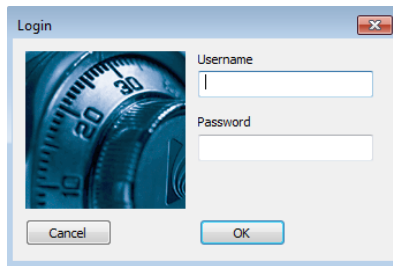


Figure 2-24: “Login” Dialog

Depending on the permissions, a user might have access to several network licenses: if so, Automation Studio™ will ask you to choose the license you want to use. In the “Select License” dialogue (*Figure 2-25: “Select License” Dialog*), simply highlight the license you want and click “Select”.

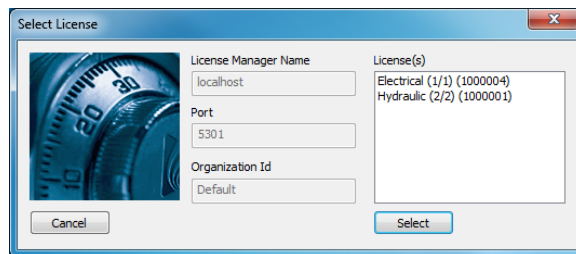


Figure 2-25: “Select License” Dialog

If the user has access to a single license, the license is automatically selected and the “Select License” dialogue is skipped.

Automation Studio™ then goes back to the “License Information” dialog. An error message is displayed in the dialogue if an error occurred in a previous step (*Figure 2-21: “License Information” Dialog*). Otherwise, click on “OK” (*Figure 2-26: “License Information” Dialogue-Normal*) to obtain the network license and start the application.

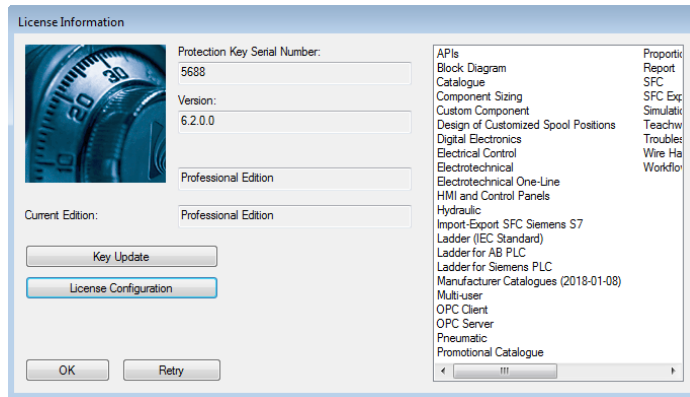


Figure 2-26: “License Information” Dialog– Normal

2.3.4.2 Mass Deployment of the Network License’s Configuration

In large companies or schools, manual installation and configuration of Automation Studio™ to use a server license can be a daunting task. However, this process can be greatly simplified by creating one default configuration for all users and then deploying this configuration to each workstation.

This chapter will describe this procedure and how to deploy the configuration file step by step.

After installing Automation Studio™, the first step will be to configure the Automation Studio™ License Manager profile (section 2.3.4.1 *Connecting to a Network License*) for the current user.

Each Windows user has his own personal Automation Studio™ License Manager configuration that is stored in the *Accounts.xml* file located in:

```
%USERPROFILE%\AppData\Roaming\Famic Technologies\Automation Studio
<ASversion>\
```

Where *%USERPROFILE%* is the location of the current Windows user’s files and *C:\User\ and *<ASversion>* stands usually for E6.X (Educational version) or P6.X (Professional version).*

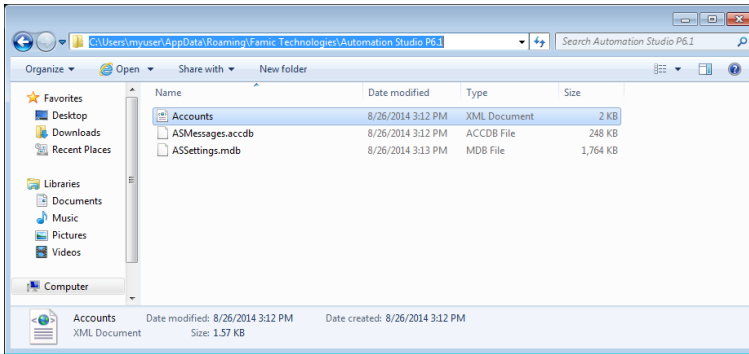


Figure 2-27 Access to Accounts.xml File

To share this configuration with other users on the same computer, rename the *Accounts.xml* file *DefaultAccounts.xml* and copy this file to:

C:\ProgramData\Famic Technologies\Automation Studio <ASversion>

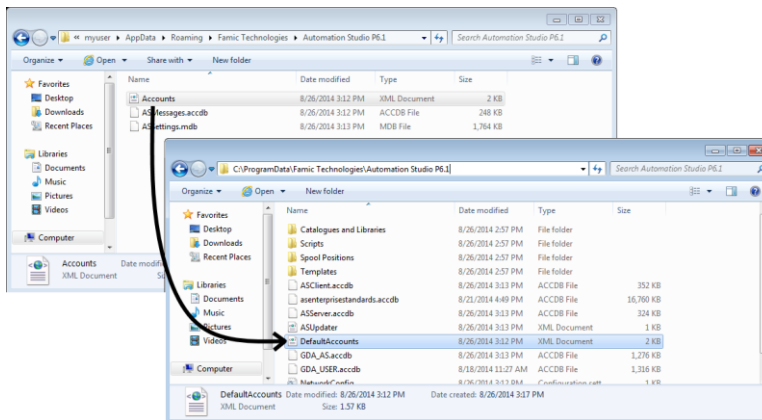


Figure 2-28 File Copy/Paste into ProgramData

From now on, whenever a new user starts Automation Studio™ for the first time on this computer, the *DefaultAccounts.xml* file will automatically be copied into that user’s License Manager configuration.

To deploy the same license configuration to other computers, simply copy the “DefaultAccounts.xml” file to that computer’s ProgramData directory:

C:\ProgramData\Famic Technologies\Automation Studio <ASversion>

2.3.4.3 Connecting to a Local License

You can also connect to a local licence.



Before you launch Automation Studio™, check that the USB key containing your local license is properly connected to your workstation.

Check the “Local Key” radio button in the “License” section. All other controls in the section should be disabled, except for the “Update Local Key” button.

Click the “Apply” (green check box) button to get back to the “License Information” dialog. Automation Studio™ will display a dialogue box asking if you want to “Exit Automation Studio” in order to use the new license type.

2.3.4.4 Updating a local license

The “License Information” dialogue allows you to update your local licenses. An update is necessary if you want to:

- Upgrade your license for a new version of Automation Studio™;
- Add workshops and/or modules to your license.



The “Update Local Key” button in the “Profile Properties” dialogue (*Figure 2-23: “Profile Properties”*) also opens the “Key Update” dialog.

To update your license, follow these steps:

1. Contact *Famic Technologies Inc.* at production@famictech.com, to get the update code for your license. You need to provide your 5-digit serial number key;



If you have an annual maintenance plan, the update codes will automatically generated for your licenses when a new version is available, and they will be all time at your disposal on the [Client Zone](#) -> Technical Support Portal under the “Key Registry” tab for the keys registered under you name.

The update codes are created for a specific version of Automation Studio™, the key can be updated only using this specific Automation Studio™ version.

☞ For example: if version 6.3 is in use and the new codes are for version 6.4, then it will be necessary to install version 6.4 and apply the new update codes.

2. Make sure you have the latest version of Automation Studio™, with the latest patches.
3. Connect the key that contains your license to the USB port of your workstation;
4. Go to the “License Information” dialogue and click the “Key Update” button. The “Key Update” window opens;

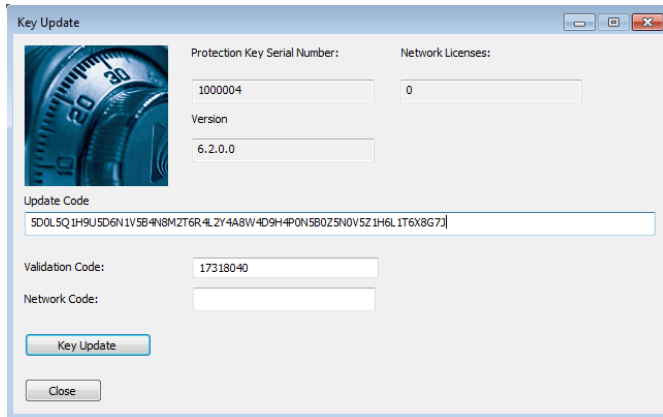


Figure 2-29: “Key Update” Window

5. Copy and paste the codes you obtained from *Famic Technologies Inc.* in the “Update Code” and “Validation Code” fields. The “Network Code” field remains empty.

☞ The codes in *Figure 2-29: “Key Update” Window* are not valid. Use ONLY the codes sent to you by Famic Technologies Inc. for your license.

☝ Do not write the codes. It is better to copy and paste them in their respective fields.

6. Click on “Key Update”. A dialogue appears, asking you to confirm that you want to proceed with the update. Click “Yes”;
7. A dialogue appears to inform you that the update was successful.